

Report to Community Safety Forum – 3rd March 2014**Subject: Crime trends and performance in
Brighton & Hove: Position up to December 2013****Contact Officer:** Name: *Ruth Condon* Tel: **29-1103**E-mail: ruth.condon@brighton-hove.gov.uk**Wards Affected:** All**1. SUMMARY AND POLICY CONTEXT:**

- 1.1 This report describes recent activities and progress relating to priority areas in the [Brighton & Hove Community Safety, Crime Reduction and Drugs Strategy 2011-14](#). It also provides statistical updates for key crime groups for 2013/14, ie. April to December 2013.
- 1.2 Graphs showing monthly crime data from April 2009 to December 2013 are also provided. These set recent data in the context of both longer term trends and also seasonal crime cycles (where applicable).

2. RECOMMENDATIONS:

- (1) The Community Safety Forum notes the information provided in this report and is invited to:
 - i) Feedback on any developments from their community or organisation's experience which may help the understanding and interpretation of the data and trends contained in this report.
 - ii) Consider the potential for supporting crime reduction and community safety priorities within their own organisation or local community.

3. INFORMATION:**Total police recorded crime**

- 3.1 After seeing a long term decline, the trend in total crimes recorded by the police levelled out in 2012/13. However a downward trend is again in evidence over the first nine months of 2013/14 (Apr to Dec) and there is a further 6% decline in total crimes compared with the same months in 2012/13¹. After showing an increase in 2012/13, theft and handling offences have decreased by 3% so far in 2013/14 and

¹ During 2012/13 national changes to the reporting of fraud and forgery meant that from Oct 2012 a large proportion of these offences were no longer reportable to the police. Omitting fraud and forgery offences to make a better comparison, total crimes have reduced by 4% over the first nine months on 2013/14 compared with the same period in 2012/13.

this will have influenced the positive trend in total crimes since they make up about half of total crime.

Neighbourhoods and quality of life

- 3.2 Following a year on year decline in the number of criminal damage offences recorded by the police up to 2012/13, numbers have continued to drop; in the first nine months of 2013/14 overall there were 3% fewer crimes than there were in the same months of 2012/13. However, there was a spike in offences in November related to damage against vehicles and against dwellings. A number of locations throughout Brighton and Hove experienced small increases in the levels of criminal damage. The only particular hotspots identified were the Brunswick & Adelaide and Hollingbury areas, both had a notable rise in the levels of criminal damage to a vehicle. Brunswick Square had a total of 13 reported cases of criminal damage to a vehicle over a short period. The perpetrators of these offences have been arrested and charged.
- 3.3 In the first nine months of 2013/14 there has been an increase in the number of non-accidental fires recorded by the fire service compared with 2012/13. However, this needs to be seen in the context of particularly low numbers recorded in 2012/13. Relative to last year less serious non-accidental fires have increased in number, but more serious fires (which are fewer than less serious fires) have declined.
- 3.4 The London Rd Local Action Team has been invited to provide input to the development around City College and it is therefore encouraging to note that the value of LATs in feeding into wider processes is being recognised. The Community Safety Projects Team has continued to identify suitable locations and projects where the opportunity exists for improving safety and feelings of safety. Links continue to be made with the Community Payback Team so that offenders can be involved in this work.

Drugs Misuse

- 3.5 There is a national and local focus on getting drug users into treatment and helping them to recover from dependency and lead a drug-free lifestyle. In 2012/13 419 people left drug treatment, of whom 230 people (55%) left treatment in a planned way, an improvement on 50% in 2011/12. However, in the first six months of 2013/14 this percentage has dropped back to 43%, although the percentage who did not represent to services within 6 months had increased slightly to 91%. Sussex Partnership Foundation Trust and the Pain Management Clinic at Hove Polyclinic have set up a six month pilot multi-disciplinary clinic to assist opiate users whose efforts to detoxify are hampered by the unpleasant side effects related to prescription of opioid pain relief drugs.
- 3.6 In November the Home Office asked all police forces to visit 'head shops'. Subsequently Sussex Police sent a letter out to all head shops in the city advising them of the police's concern around so-called 'legal highs' and advising them that many substances they may have believed were legal are now controlled drugs, or subject to a Temporary Drug Class Order. Follow-up visits were carried out at three of the main shops and they were encouraged to promote information relating to the signposting of substance misuse services. Overall, the visits were very positive and further visits are planned alongside Trading Standards.
- 3.7 Partnership working between the DWP (Jobcentre Plus), the Work Programme, and SMS is resulting in the DWP releasing 2 workers for ½ a day a week, to work individually with SMS clients in outreach venues. They will discuss employment, training and education options and can also provide advice on benefits. This can help to ensure clients' progress towards recovery is not put at risk.

Reducing Offending

- 3.8 Following a rise in the total number of acquisitive crimes (incl. theft/handling, burglary and robbery) over the last two years, the first nine months of 2013/14 are showing a decrease of 1.3% compared with the same months in 2012/13. The number of domestic burglaries have shown considerable variation over the last two years with the lowest monthly numbers (about 40 crimes) being recorded in Nov and Dec in 2011 and the highest recorded about one year later (in the region of 120 crimes). Numbers have continued to fluctuate substantially during 2013, showing no consistent trend.
- 3.9 There were fewer vehicle crimes in 2012/13 compared with 2011/12, but in the first nine months of 2013/14 numbers are showing a 35% rise compared with the same months in 2012/13 with a particular increase observed between Oct and Dec 2013. This rise has been seen in both theft of and theft from vehicles, but thefts from vehicles have shown a particular increase (up by 40%). Theft from a vehicle saw a general increase across the majority of Brighton. The main hotspot areas were St. Peter's & North Laine, Hanover & Elm Grove, Hollingbury and Withdean. It was believed to be a specific group involved. There were 35 arrests made during this period in relation to theft from a vehicle and charges were made for 44 offences.
- 3.10 Partnership work aimed at stopping reoffending and tackling the underlying reasons behind offending is ongoing. This has included screening and referring offenders with medical needs into treatment. In the first half of 2013/14 a total of 555 offender assessments were made in custody and courts across Brighton and Hove, leading to 235 referrals to services. Sussex has been selected as one of 10 national sites for the expansion of these Liaison and Diversion services.
- 3.11 Inspire, is an initiative based at Brighton Women's Centre which works specifically with female offenders. 68 women started with Inspire during the first three quarters of 2013/14. Success of this work is judged by measures such as reoffending and engagement in substance misuse treatment services.

Alcohol Misuse and Alcohol-related Disorder

- 3.12 Alcohol-related hospital admissions were on an upward trend from the beginning of 2010 until October 2011, but this trend has reversed since then. Numbers recorded in 2012/13 were 9% lower than in 2011/12 and show a further decline of 11% in the first eight months of 2013/14 compared with 2012/13.
- 3.13 There were 1,135 police recorded crimes of injury violence in the first nine months of 2013/14, 9% below the same months in 2012/13. This is a good result, following a slight increase in these crimes which occurred in the year 2012/13 compared with 2011/12.
- 3.14 A range of positive work to tackle alcohol misuse continues to be progressed. There are plans for an alcohol free pub and a 'recovery' cafe' (for people in recovery from alcohol and drug misuse) to open in the city. One is being taken forward by a local CIC (Community Interest Company), and the second by a local charity.
- 3.15 Over seventy off-licences in Brighton and Hove have signed up for the local 'Sensible on Strength' scheme to reduce the number of outlets selling high and super strength beer and cider.
- 3.16 Another initiative involves Emergency Assessment Centres (EAC) which are pop-up centres set up to address the most vulnerable rough sleepers with the specific aim to 'reduce the risk of harm occurring to people, by ending their period of rough sleeping and supporting them to access safe accommodation. The EAC provides a safe

space where multiple agencies (specialist workers from mental health, primary healthcare, substance misuse, accommodation and support teams) can work together to achieve positive move-on outcomes for clients. When the police go out, they engage with people and bring them into the EAC. These are programmed to take place 11 times during 2014.

Anti-Social Behaviour

- 3.17 In the first nine months of 2013/14 there were 10,761 incidents of anti-social behaviour recorded by the police, 10.5% fewer than in the same months of 2012/13.
- 3.18 The dedicated duty line for reporting anti-social behaviour and hate incidents/crimes has been running since May 2012 (01273 292735 or communitysafety.casework@brighton-hove.gov.uk). Between Apr and Dec 2013 there were 514 calls to the duty line; 346 of those related to ASB, 61 to race, 11 to disability, 22 to sexual orientation, 5 to religion, 2 to gender identity and 67 others. Over this same period there were 136 new cases for the Casework Team.
- 3.19 Following our local trial of the community trigger, the Community Safety Casework Team has been asked to support the Home Office in developing a guide and delivering workshops. This will cover how to implement and manage a community trigger scheme to help bring about swift remedies for victims of ASB and hate where those victims feel that they have not received a good service.
- 3.20 An expression of interest has also been submitted to the Police and Crime Commissioner with regard to monies available from the government via the PCC for work on restorative justice. This will enable us to implement a Restorative Justice Strategy for the city with some resource behind it building on existing good practices.

Children, Young People and Families

- 3.21 Police-recorded crimes against young people aged under 18 have reduced in each of the last two financial years and are continuing to do so in the first nine months of 2013/14 – a further reduction of 13% compared with the same months in 2012/13.
- 3.22 The number of young people aged 10-17 entering the criminal justice system decreased from 92 in 2011/12 to 81 in 2012/13 (national published data). Local responses to new legislation at the beginning of 2013/14 are thought to have resulted in an increase in the first half of 2013/14, but interim local data are suggesting that numbers are stabilising during the third quarter of the year.
- 3.23 There has been an upward trend in the percentage of young offenders who reoffend in Brighton & Hove (latest data for the 2011 cohort of young offenders). One initiative to which a group of young offenders seems to have responded positively is a programme with the Chris Donovan Trust whose work aims to prevent repeat offending and promote victim awareness and restorative justice.
- 3.24 The Youth Early Help pathway continues to provide a joined up process to ensure that all relevant agencies are involved at the earliest stage to identify and reduce risk factors for young people. An Early Help Strategy has been developed to direct this work.

Domestic Violence

- 3.25 In the first nine months of 2013/14 there were 2,813 domestic violence crimes and incidents recorded on the police crime database, which compares to 2,739 in the same months in 2012/13. The national and local definition of domestic violence was amended in April 2013 to include 16 and 17 year olds.

- 3.26 A domestic abuse surgery was launched in January 2014. Through the surgery women and men of all ages who are experiencing domestic abuse can find out about the options available to them and where to get help, get advice on housing options, finances, substance misuse and mental health issues, and talk to someone privately about their concerns. The surgery is staffed by Sussex Police and RISE, and facilitated by Brighton & Hove City Council through the Hove Customer Service Centre at Hove Town Hall and takes place every Wednesday morning. Further information can be found at (<http://www.safeinthecity.info/domestic-abuse-surgery>).

Sexual Offences

- 3.27 The number of police recorded sexual offences in the first nine months of 2013/14 was 292, and this compares with 255 recorded in the same months of 2012/13. This builds on the increase seen during the second half of 2012/13, with serious sexual offences increasing more than less serious offences.
- 3.28 This increase in reporting is having an impact on specialist sexual violence services. Survivors' Network is commissioned to provide an Independent Sexual Violence Advisor (ISVA) service, and following a joint re-commissioning exercise with East Sussex, has established a stronger team.

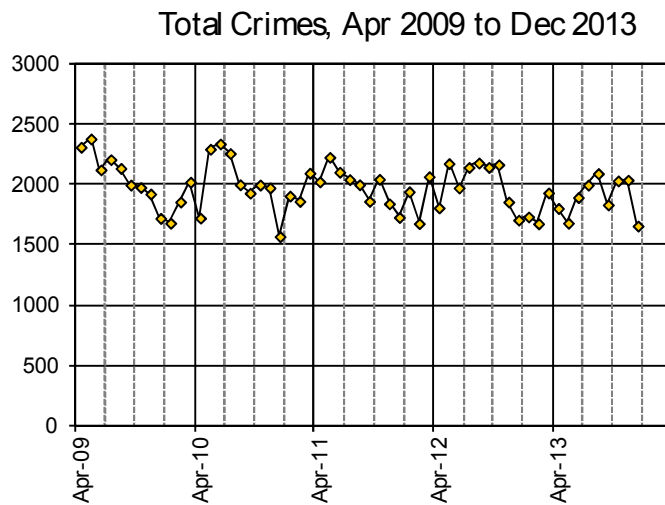
Hate Incidents and Crimes

- 3.29 Sussex Police have been undertaking staff training and other work to improve procedures for recording hate crimes and incidents on their crime/incident recording system. The police recorded 156 racist and religiously motivated incidents and crimes in the first nine months of 2013/14 compared with 129 in the same months of 2012/13. The respective figures for LGBT hate incidents and crimes recorded by the police were 74 in the first nine months of 2013/14 compared with 55 in the same months of 2012/13. These increases are likely to have been influenced by improved police recording procedures and administrative changes.
- 3.30 The Racial Harassment Forum (RHF) has continued to engage with the four local NHS trusts to seek to improve trusts' accountability to the communities, influence working practices, improve support to RRMI victims and responses, and improve data sharing and analysis. Community members and lead officers have met with the leadership and senior officers of two trusts and further work is to be progressed with one of the trusts.
- 3.31 Opportunities to engage with marginalised and vulnerable LGBT groups to address their safety needs have been taken at various opportunities, with ongoing engagement work to improve trust and confidence and encourage reporting. A Trans needs assessment is being progressed in partnership with members of the Trans community public health/council colleagues. A training video has been produced by Sussex Police and is being used to raise awareness among police, council and may be extended to other agencies.
- 3.32 The police have recorded 24 disability hate crimes and incidents in the first nine months of 2013/14; this compares with 12 recorded in the same months of 2012/13 so the trend is in the right direction in terms of seeking to encourage people to report and improving recording. The reporting of disability hate incidents to the Community Safety Casework Team has increased slightly since the last report, with 11 reports being received in the first nine months of 2013/14. However, the need to continue work to encourage reporting is ongoing.
- 3.33 A successful partnership campaign to raise awareness of disability hate incidents, improve confidence and reporting, increase access to service, and improve the

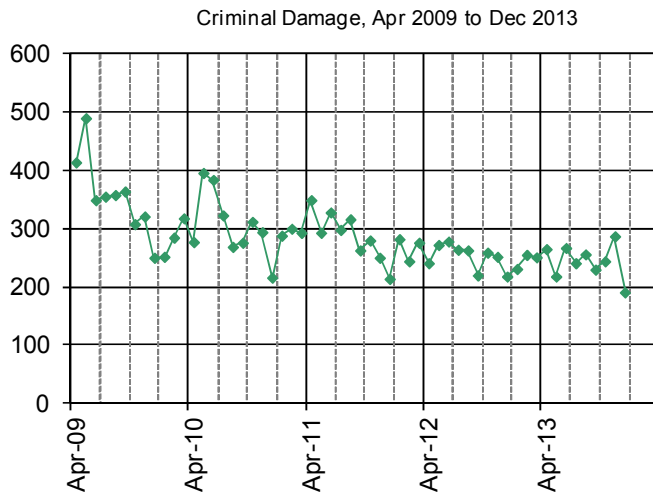
overall safety of people with learning disabilities has been running this year. A successful conference integrating people with learning disabilities and non-disabilities was held titled 'It's Not On– Stop Hate Crime Towards People with Learning Disabilities'. This promoted city-wide messages of the unacceptability of hate incidents and the need to reduce social tolerance of hate incidents against disabled people. '*Safe In The City*', a film produced locally by people with learning disabilities, was shown at the conference and may be used as a resource for schools in future.

3.34 '*Living Without Fear*', a play performed by six young people with learning disabilities was shown in the city and was attended by various strategy portfolio holders as well as disabled people and support organisations. The event was used to stimulate and influence work to improve awareness and reporting of disability hate incidents within the community. Senior officers from Sussex Police attended the event and demonstrated their commitment to improve recording and responses to hate incidents against disabled people.

Crime trends up to December 2013 (monthly data)

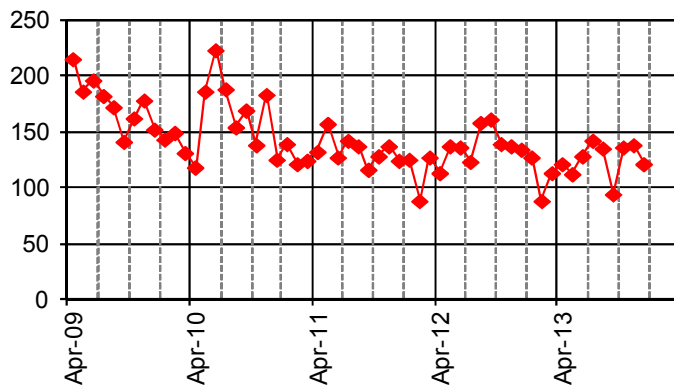


3.35 The number of crimes recorded by the police has continued to demonstrate a seasonal pattern with numbers rising over the summer compared with the winter months. In general numbers since April 2013 are lower than the same months in 2012.



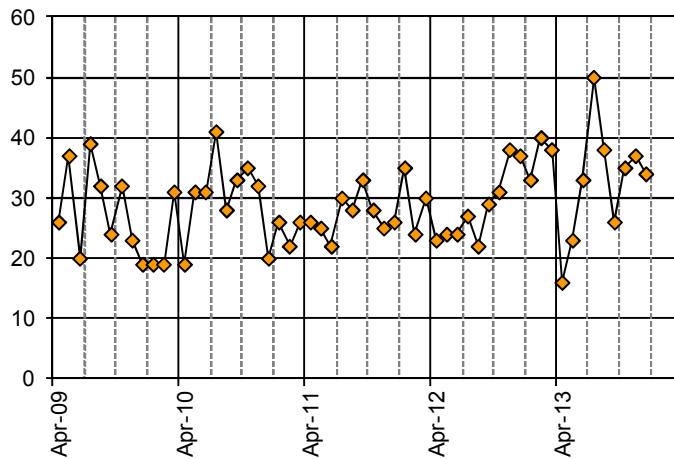
3.36 The long term downward trend in criminal damage continues. The number of recorded offences in November nearly reached 300, the highest number for two years, but numbers dropped again in December. The November peak was seen in damage against both vehicles and dwellings.

All Injury Violence
Apr 2009 to Dec 2013



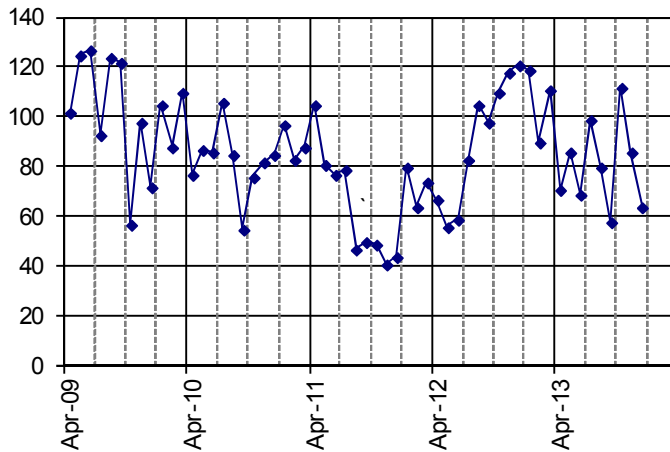
3.37 The general trend in injury violence continues to fall, and numbers in 2013/14 to date are than last year. Season effects would predict a drop in recorded offences between January and March 2014.

Sexual Offences Apr 2008 - Dec 2013



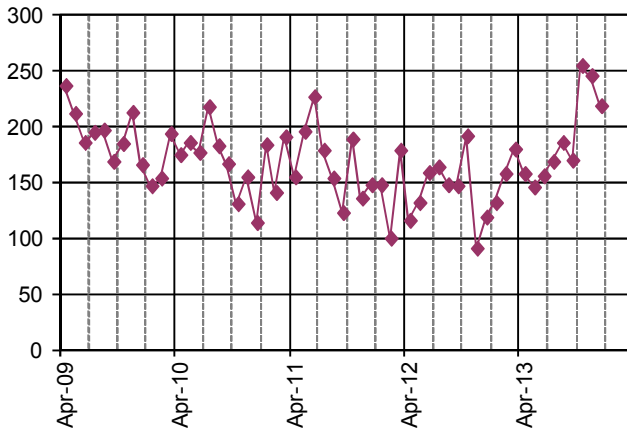
3.38 The sexual offences data between April and September show considerable fluctuation which is likely to be a result of delayed data entry linked to the implementation of the new police crime management system. Numbers over the last three months seem to have stabilised at about 35 per month.

Domestic Burglary, Apr 2009 to Dec 2013



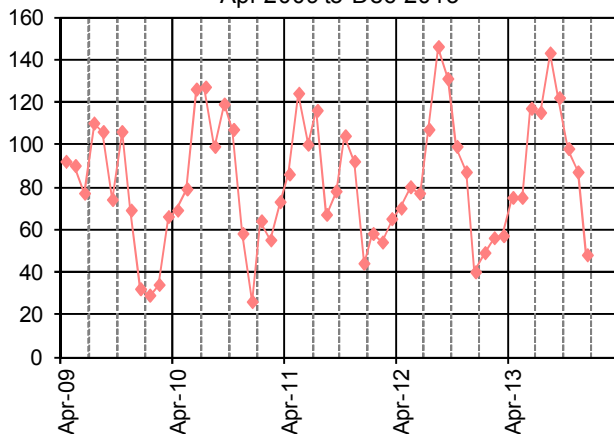
3.39 The average number of domestic burglaries from April to December 2013 dropped notably from the monthly average last winter. However, monthly numbers during 2013/14 to date have shown a degree of fluctuation with October recording the highest number (109).

Vehicle Crime, Apr 2009 to Dec 2013



3.40 The number of vehicle crimes has been on a long term decline. However over the last six months or so there this trend was reversed, with particularly high numbers between Oct and Dec. This is a result of a sharp rise in thefts from motor vehicles, although thefts of vehicles had also risen.

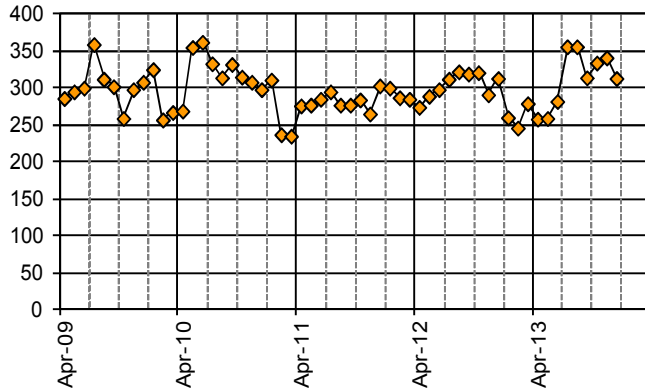
Theft of a Pedal Cycle, Apr 2009 to Dec 2013



3.41 A strong seasonal pattern in cycle thefts continues and is linked to those months when more people tend to cycle. The trend in 2013 is broadly similar to that in 2012.

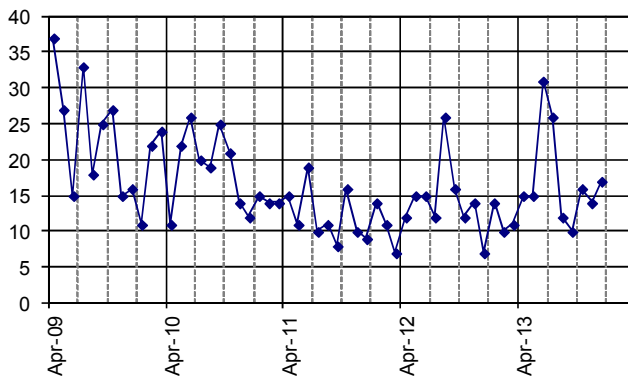
Police crime data presented in this report only reflect those crimes which are reported and recorded. There is likely to be a level of underreporting in many crime types. However, domestic violence and the hate crimes on this page may be particularly liable to underreporting.

Domestic Violence Crimes and Incidents
Apr 2009 - Dec 2013



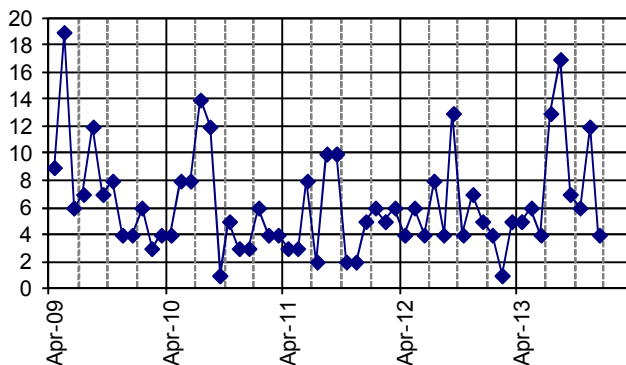
3.42 The number of police recorded domestic violence incidents and crimes in the last six months have been higher than in the preceding six months. However, there may have been some delayed data entry for incidents which occurred during May and June, contributing to lower numbers in May and June and heightened numbers during July and August.

Racist Crimes and Incidents (police crime database),
Apr 2009 to Dec 2013



3.43 After a rise in the number of racist crimes and incidents in June and July, numbers in the most recent five months have returned to a level more typically observed over the last two years.

Homophobic crimes and crime-related
Incidents (police crime database),
Apr 2009 to Dec 2013



3.44 The number of police-recorded homophobic crimes and incidents rose in 2012/13 and compared with 2011/12. There was a particular increase in July and Aug 2013, but has dropped since then.

Crime statistics 2013/14: position at end December 2013

	number of crimes Apr 12-Dec 12	number of crimes Apr 13-Dec 13	rank within 15 bench-marked CSPs ²
Police recorded crimes			
Total Crimes	18189	17064	10
Criminal Damage	2267	2199	13
Injury Violence	1250	1135	9
Sexual Offences	255	292	n/a ³
Domestic Burglary	817	725	4
Theft from/of a Motor Vehicle	1268	1705	8
Theft and handling (excl. motor vehicle theft)	8909	8636	9
Pedal Cycle Theft	837	880	7
Police recorded crimes and crime-related incidents			
Domestic Violence Crimes and Incidents ⁴	2739	2813	n/a
Racist Crimes and Incidents	129	156	n/a
Homophobic Crimes and Incidents	55	74	n/a
Disability Hate Crimes and Incidents	12	24	n/a

² Brighton & Hove is matched for comparative purposes with 14 other Community Safety Partnerships (CSPs) according to a range of socio-demographic and geographic variables. A rank of 1 is the best; 15 is the worst; 8 is the middle position. Data reflect the ranking for the most recent three month period.

³ Because sexual offences, DV and hate crimes are subject to underreporting and local work is being undertaken to increase reporting of these crimes, it is not appropriate to judge performance in comparison with other Community Safety Partnerships based on the number of police recorded crimes.

⁴ This includes incidents where the victim is of any age, not just 16 and over as in the national definition, so will be a slight overestimate.